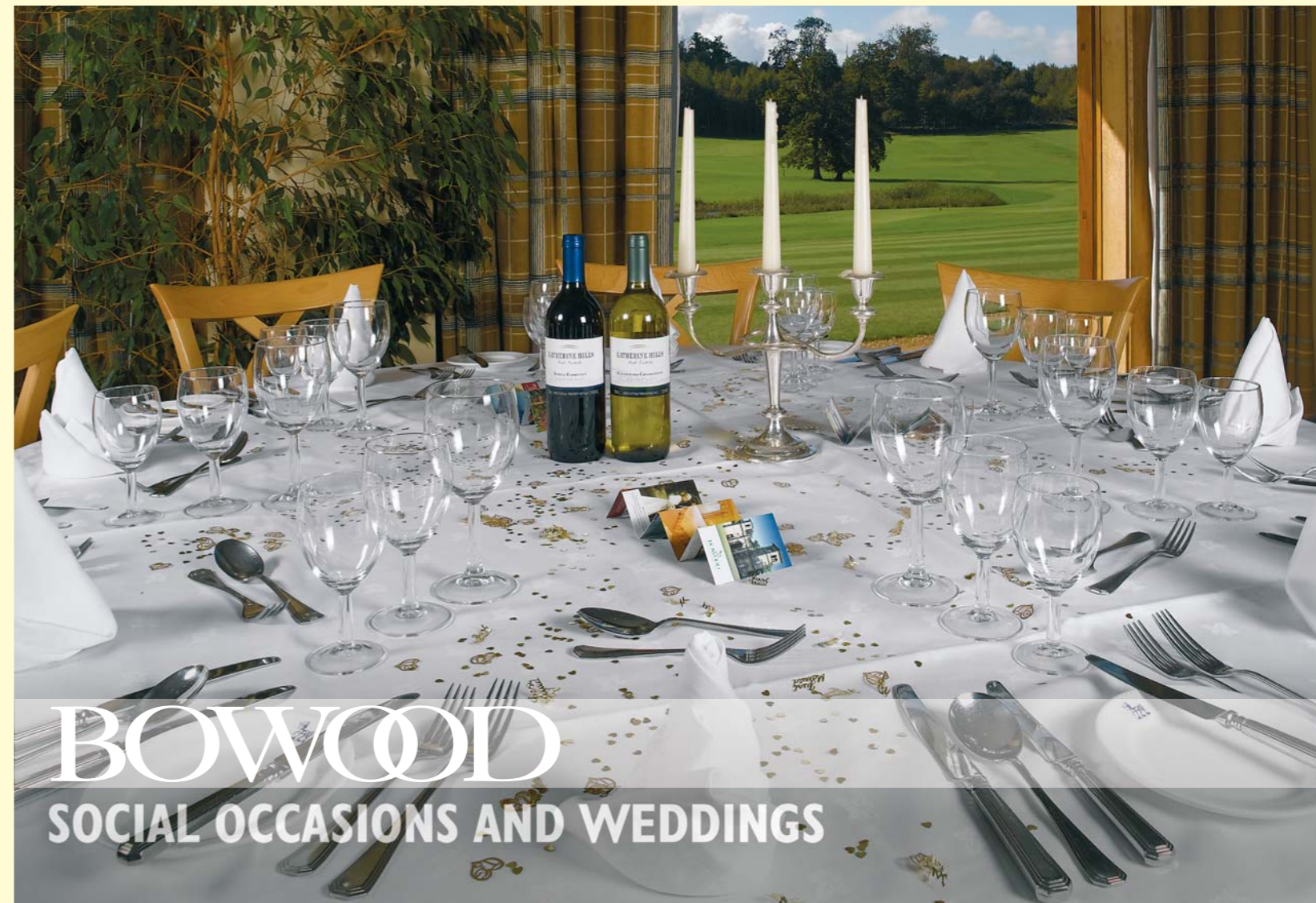
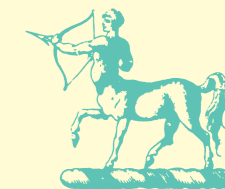


Bowood Golf and Country Club, Derry Hill, Calne, Wiltshire SN11 9PQ
Telephone: 01249 822228 • Fax: 01249 822218
www.bowood.org • E-mail: golfclub@bowood.org

Designed and produced by Jarrold Publishing, Norwich
Printed in Great Britain 5/05

SOCIAL OCCASIONS



BOWOOD
SOCIAL OCCASIONS AND WEDDINGS



SOCIAL OCCASIONS AND WEDDINGS

For an extra special occasion, you need an extra special setting. You need look no further than Bowood.

As you pass through the majestic 'Golden Gates', built by Sir Charles Barry in 1840, and enter the western corner of 'Capability' Brown's 2000-acre (809 ha) Grade I listed Great Park, we hope that you will agree.

As you approach the lovingly converted 18th-century Clubhouse in the midst of this oasis and take in the stunning views which surround you, we feel sure that you will agree.

But as you enter the superb Kerry Suite, with its stylish Cocktail Bar and enchanting enclosed garden, and view the magnificent Lansdowne Marquee with its sumptuous pleated linings and impressive chandeliers, we know that you will agree.

Whether you are planning a wedding reception, party, ball, banquet, barbecue or family celebration, both the Lansdowne Marquee and the Kerry Suite are ideal settings.

Every effort is made by the staff at Bowood to ensure that your function exceeds all expectations.

All arrangements are made through our dedicated hospitality department which will liaise with our Banqueting Manager and Head Chef to make certain that your specific requirements are met. Advice on wine and menu selection is readily available from our experienced and helpful staff; we can also arrange for your floral decorations, announcements, cake-stand, table-linen and room layouts. On the day, our Banqueting Manager will be on hand to oversee every detail, allowing you to relax and enjoy your special occasion. We can also advise on local services such as entertainers, photographers, florists and accommodation to ensure that you have everything you require.

At Bowood Golf and Country Club we offer the opportunity to get married by civil license in a choice of one of our three elegantly furnished rooms: The Fitzmaurice Room, Members' Lounge and Clanmaurice Room. All of these settings add a sense of style which other locations will find difficult to match.

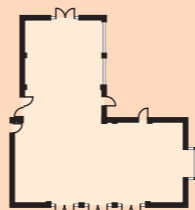
The maximum numbers of attendees at ceremonies in these rooms (including the two Registrars) are as follows: Clanmaurice Room: 62; Fitzmaurice Room: 52; Members' Lounge: 10.



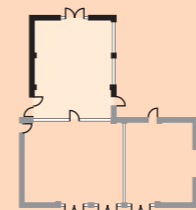
THE KERRY SUITE

The Kerry Suite can be taken in its entirety or can be divided into three separate rooms – named Kerry, Wycombe and Clanmaurice – for smaller parties. Alternatively, if the entire Kerry Suite is too large but one of its three rooms too small, Kerry and Wycombe or Wycombe and Clanmaurice can be combined to make the ideal dimensions.

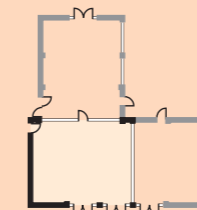
The Kerry Suite (230m²)
16 round tables 160-192



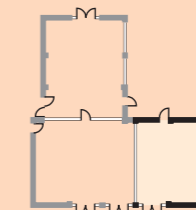
Kerry Room (87m²)
6 round tables 60-72



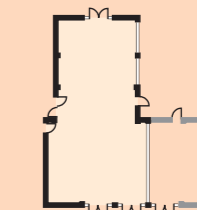
Wycombe (87m²)
6 round tables 60-72



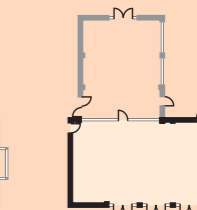
Clanmaurice (58m²)
4 round tables 40-48



Kerry+Wycombe (175m²)
12 round tables 120-144



Wycombe+Clanmaurice (145m²)
10 round tables 100-120



WEDDING RECEPTIONS

To ensure you have the perfect day, we will arrange:

- A red-carpet welcome for the bride and groom
- A complimentary glass of Champagne for the bride and groom
- Announcements can be made by our Banqueting Manager
- A round or square cake-stand and ornamental knife
- Room layout, table-linen, menu and wine selection
- Formalities
- If required, we can suggest reliable local photographers, entertainment, toastmasters, florists and accommodation

THE LANSDOWNE MARQUEE

This magnificent purpose-built 300-square-metre (3229 sq ft) marquee (right), situated next to the Clubhouse, is a permanent fixture during the

summer months. Lit by chandeliers, the marquee is sumptuously furnished with pleated linings; it also has its own bar, dance floor and car park. Its maximum capacity, with round tables installed, is 200 guests.

THE KERRY SUITE

This superb suite (left) was opened in June 1998 and covers 325 square metres (3469 sq ft), incorporating its own cocktail bar and enclosed garden. The Suite can be taken in its entirety or can be divided into three separate rooms – named Kerry, Wycombe and Clanmaurice – for smaller parties. If the entire Kerry Suite is too large but one of its three rooms too small, Kerry and

Wycombe or Wycombe and Clanmaurice may be combined for the ideal dimensions (see below).

Where necessary, for larger parties, a small marquee can be erected to accommodate a stage, band and dance-floor. Alternatively, a stage and dance-floor can be erected in the Clanmaurice Room.

